

CTR

RAILWAY TRACK EQUIPMENT

Double Cutter Weld Trimmer

Licence : Permaquip:U.K.

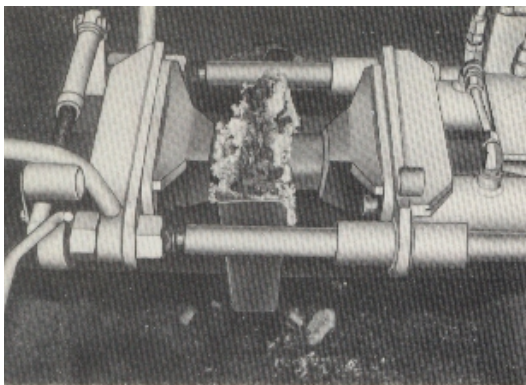


Hydraulic power pack operated mode;. Consists of two cutting heads, trimming rams and one direction control valve, all mounted in an easy to handle fabricated frame. Separate power pack with hose connectors. Suitable for trimming thermit welds, leaving maximum 1.5mm. metal on the top and sides of the rail head for finish grinding. Mechanical stoppers prevent fouling of cutting heads after trimming. Cutting heads available for various rail sections. Retipping service provided.

RAILWAY PRODUCTS DIVISION
CTR MANUFACTURING INDUSTRIES LTD.
NAGAR ROAD, POONA 411014

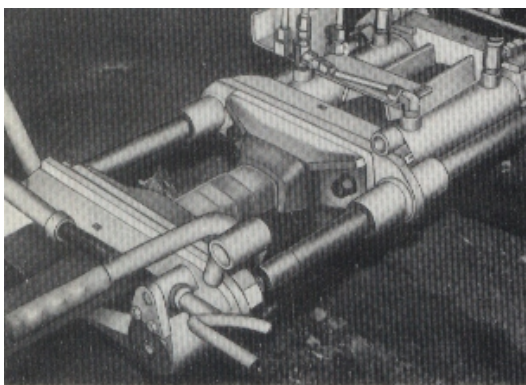
PHONE : (020) 26633402/05
E-MAIL : railwayproducts@ctr.in
FAX : 91 (020) 26633425

PMPQD 1021
JUL. 2008



OPERATION

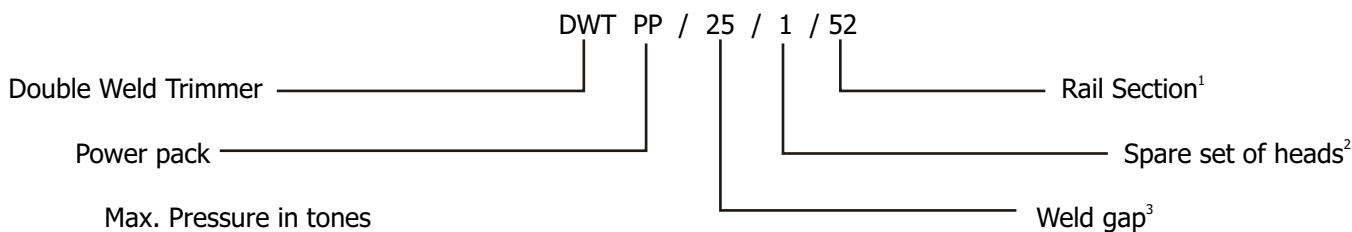
Place the machine on the rail, with the welding mould in between the two cutting heads, 3 to 4 minutes for 25mm gap and 8 to 9 minutes for 75mm gap after pouring hot metal. Operation of the pump results in both cutting heads moving in an inward direction trimming excess metal. With reversal of direction control valve, cutting head move outwardly. Trimming time approximately half a minute. Specially designed tip of cutting head permits resharping by grinding.



ADVANTAGES

Smooth hydraulic operation, eliminates the risk of hot metal flying. Since the pump is not mounted on the trimmer, jerks and trimmer, jerks and vibrations are eliminated producing a uniform trim. Marginal excess material on the rail head after the welded joint has been trimmed, permits trains to pass at caution. Simple to operate with minimum operator training. Wheels provided for easy transportation on monorail.

NOMENCLATURE



1 : 52 kg
 : 60 kg
 : 90 R

1 : Not Required
 2 : Same section
 3 : Specify other section

3 : 25/50mm gap
 : 75mm gap

SPARES & ACCESSORIES

List of recommended spares available on request for Power pack see separate catalogue.

TECHNICAL DETAILS

Welded mm	Approx. weight kg	Appx. Dimensions	
		Length mm	Width mm
25/50	87	1220	680
75	90	1280	680